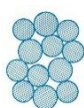




ANDROMEDA



Andromeda's Pulling-In-Rope exhibits zero torsional resultant under load. It is easily handled and tolerant of rough usage which can occur in the field. When slack lines occur it does not kink like ordinary wire rope.

It should be noted that all helically laid wire ropes show torsional resultant ("spin"), even the so-called non-rotating (17 x 7 and 34 x 7) constructions. These are also difficult to handle in open-line work with a simple kink causing unrepairable damage.

Raymond McLaren - Founder - Andromeda Industries

Distributed by:



SUPPLIES
SCAVENGER



[Contact us](#)

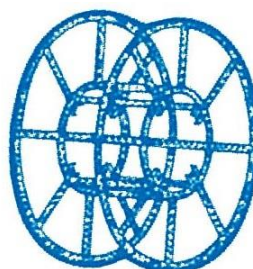
PULLING-IN-ROPE



Made from strands of high tensile wire. Non-rotating (*can be wound onto winch drums under load without kinking like ordinary wire rope*)



Used for above and below ground power line Construction. Robust and easily handled. Runs over capstans, sheaves and inside in-ground conduits.



Max. nom. 24mm dia. providing MBL of 290 kN and each feedstock strand is destruction tested prior to plaiting.

Jig assembled tubular steel reels can be supplied with orders.