



EASE OF USE OF THE CONTROL HANDLE

UNIQUE BATTERY PROTECTION

360° ROTATABLE & DETACHABLE HANDLE

PROTECTION PADS

18,5 Kg

THE LIGHTEST IN ITS RANGE: LESS THAN 19 Kg

DESIGNED GRIP TIP
MAX SPREADING FORCE 783 Kn



The MK combined tool is a very effective tool for applications such as door openings, enabling you to spread, squeeze and cut. It will be most used for big rescue operations in buildings and secluded areas after road traffic accidents.

The thin tips of the arms will ensure an excellent grip in narrow openings.

The MK combined tool also boasts itself with a great cutting force.

ACCESSORIES

2 locks with chain, 2 chains of traction with a hook. Locking system with pin and self-locking. Adaptation and positioning by quick tightening

Maximum working force:	60 Kn
Dimensions of chain links:	10 x 30 mm
Chain resistance:	74 Kn
Strength of links:	74 Kn
Length of a chain	1.8 m
Weight:	13.8 kg



Pulling device with pins to fix chain set

Mechanical extension for combi tool MK

Use with two ball stop pins
Extends up to 700 mm
Weight: 6.1 kg





AUTONOMY

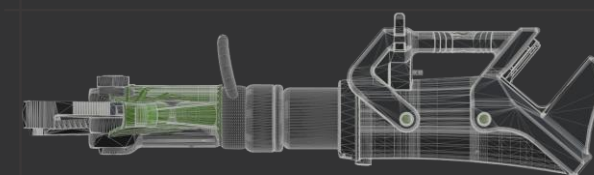
- ▶ Long operating time thanks to 5.0 Ah 28V capacity Li-ion battery
- ▶ Same battery fits all tools
- ▶ Batteries available at any Milwaukee dealer throughout the world

ROBUST

- ▶ Fiber reinforced housing fitted with pads for hardest use
- ▶ Special housing design for extra battery protection
- ▶ Forged laminated steel blades

ERGONOMY

- ▶ 360° rotatable and detachable handle – ideal for restricted confined space operation
- ▶ Lightweight and balanced tool
- ▶ Special control handle for fine tuning and ease of use
- ▶ Non slip handle grip for solid tool utilization
- ▶ Intuitive ON/OFF switch with incorporated light

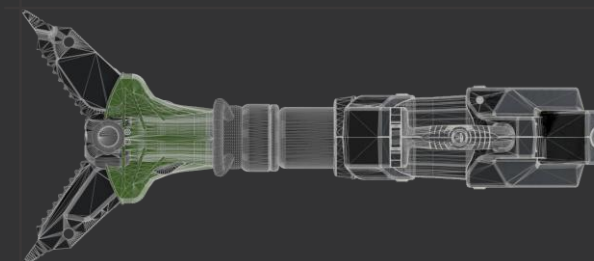


782 mm



232 mm

240 mm



TECHNICAL CHARACTERISTICS

Spreading distance	360 mm
Spreading force	48 – 783 Kn
Cutting force	466 Kn
Cutting force (round steel bar)	30 mm
Weight without battery	18.5 kg
L x l x H	782 X 232 X 240 mm
Working pressure	700 bar
EN Class	CK 37/360 H – 19 [1I-2J-3H-4K-5K]