

# RAM TR 1360



EASE OF USE OF THE CONTROL HANDLE

UNIQUE BATTERY PROTECTION

4 POINTED TIPS FOR A STRONG SAFE GRIP

PROTECTION PADS

360° ROTATABLE HEAD

17,8 Kg

1360 MM STROKE

# RAM TR 1360



The TR ram is used to create and stabilize openings after a car or truck accident to free victims.

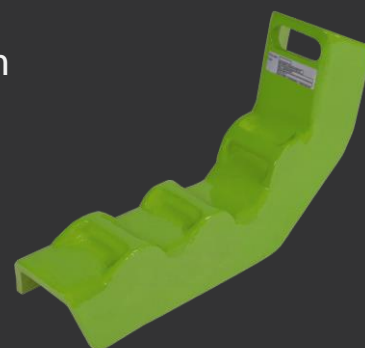
It can also be used to maintain a structure after a collapsed building or a natural disaster.

It is **the first telescopic RAM on the market to reach 1360 mm fully deployed** and it has great features. Its special head design with 4 pointed tips will maintain a strong and safe grip on any structure and its 360° head rotation will enable to manoeuvre the ram easily in many angles.

## ACCESSORIES

Support for safe use on B-pillar of the vehicle

Maximum load:	269,5 Kn
Resistance:	120 Kn
Dimensions:	L460 x H320 x D145 mm
Weight:	9.8 kg





## AUTONOMY

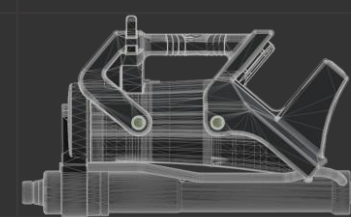
- ▶ Long operating time thanks to 5.0 Ah 28V capacity Li-ion battery
- ▶ Same battery fits all tools
- ▶ Batteries available at any Milwaukee dealer throughout the world

## ROBUST

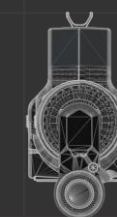
- ▶ Fiber reinforced housing fitted with pads for hardest use
- ▶ Special housing design for extra battery protection

## ERGONOMY

- ▶ Lightweight and balanced tool
- ▶ Special control handle for fine tuning and ease of use
- ▶ Non slip handle grip for solid tool utilization
- ▶ Intuitive ON/OFF switch with incorporated light

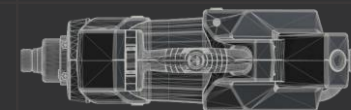


560 mm



134 mm

347 mm



## TECHNICAL CHARACTERISTICS

<b>Stroke</b>	800 mm
<b>1<sup>st</sup> piston stroke</b>	430 mm
<b>2<sup>nd</sup> piston stroke</b>	370 mm
<b>Pushing force</b>	108 Kn / 62 Kn
<b>Ful extension</b>	1360 mm
<b>Weight without battery</b>	17.8 kg
<b>L x l x H</b>	560 X 134 X 347 mm
<b>Working pressure</b>	700 bar
<b>EN Class</b>	TR 108/430 - 62/370 -18